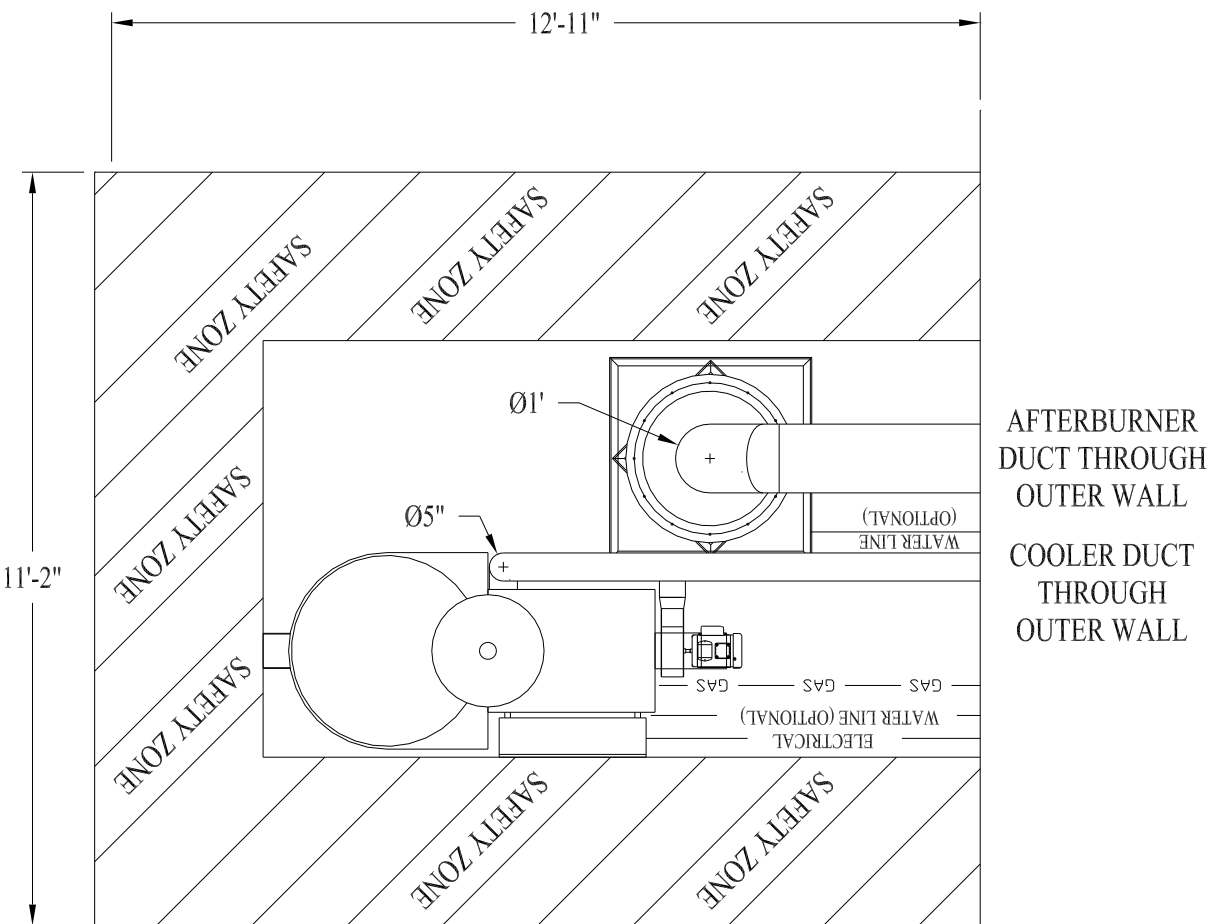
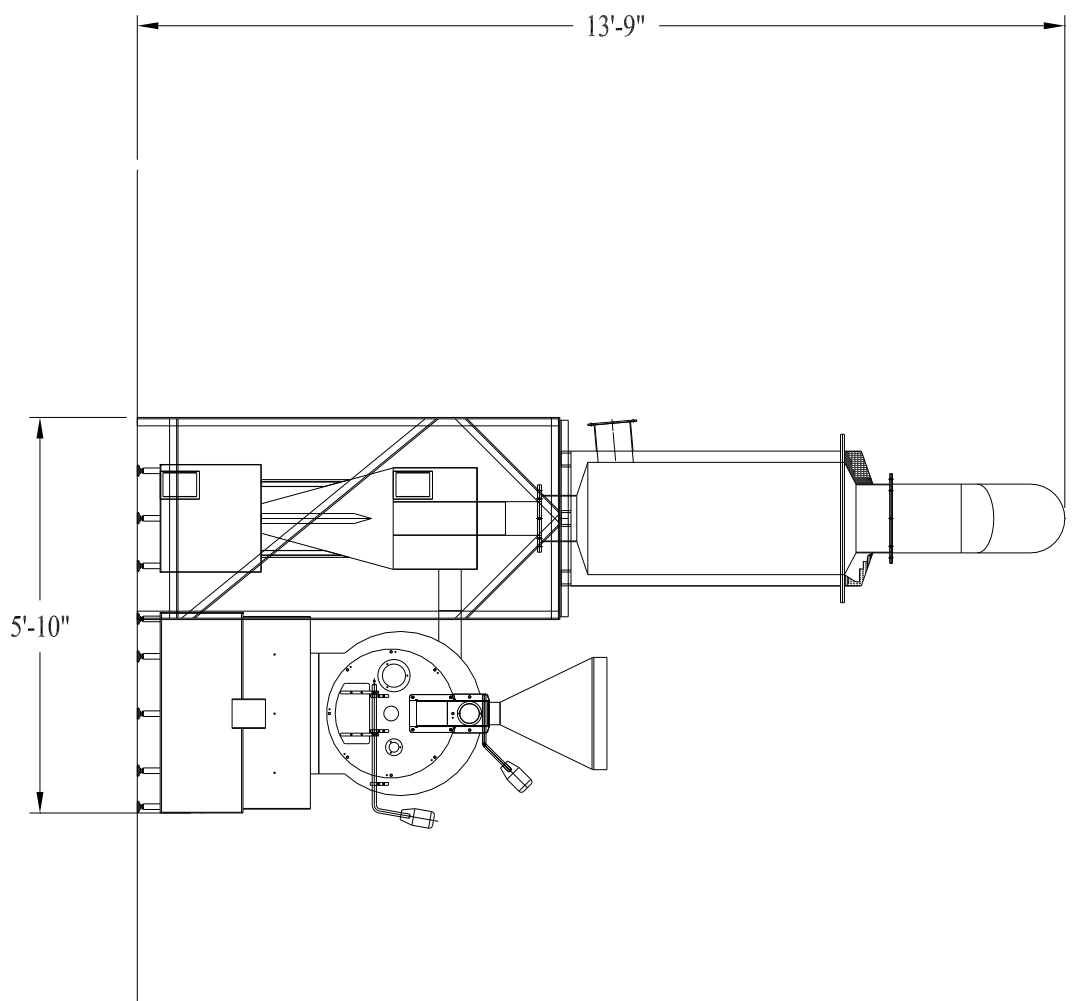


- NOTES:
1. 12" DUCTING REQUIRED FOR AFTERBURNER EXHAUST (16GA STAINLESS ACCEPTABLE IF GOING THROUGH BRICK OUTER WALL, DOUBLE WALL SUGGESTED WITH 2" INSULATION)
  2. 5" DUCT REQUIRED FOR COOLER EXHAUST (16GA MILD STEEL DUCTING ACCEPTABLE)
  3. 725,000 BTU AFTERBURNER
  4. 150,000 BTU ROASTER
  5. 9" WATER COLUMN GAS PRESSURE PREFERRED, GAS CONNECTION 3/4" NPT AT CONNECTION POINT, GAS TUBING SPECIFIED BY LOCAL GAS COMPANY



**IMPORTANT**  
 NOTE:  
 3 FOOT SEPERATION AT EXHAUST POINT BETWEEN AFTERBURNER AND COOLER



PROPERTY OF ROASTERS EXCHANGE  
 This message is for the sole use of the intended recipient(s). If you are not an intended recipient you should not read, copy, disclose, circulate or in any other way use this information. The information contained in this transmission may be confidential and/or privileged.

		TOLERANCES: UNLESS OTHERWISE NOTED			<b>Roasters Exchange</b> 1530 West Main Oklahoma City, Ok 73106	DRN.BY RLS	DATE 01/05/07	TITLE
		DECIMAL	FRACTIONAL	ANGULAR		CKD.BY	DATE	23 KILO ROASTER DRAWING
		2 PL. ±.015	±1/32"	± 1%	APPD.BY	DATE	DRAWING NO.	
A	NEW DRAWING	3 PL. ±.005			SCALE NO SCALE		RE2007	
LET	REVISION	RLS 01/05/07						
		SIG. - DATE						